



UNIVERSITY OF PADUA
DEPARTMENT OF INFORMATION ENGINEERING

DEPARTMENT OF
INFORMATION
ENGINEERING
UNIVERSITY OF PADOVA



DIRECT: Behind the CLEF Infrastructure

Giorgio Maria Di Nunzio

dinunzio@dei.unipd.it

Nicola Ferro

ferro@dei.unipd.it

Information Management Systems Research Group



What's behind the curtains?

The screenshot shows a Microsoft Internet Explorer browser window titled "DIRECT for CLEF 2005 - Microsoft Internet Explorer". The address bar displays "http://piscopia:8080/direct/login.jsp". The main content area features the following elements:

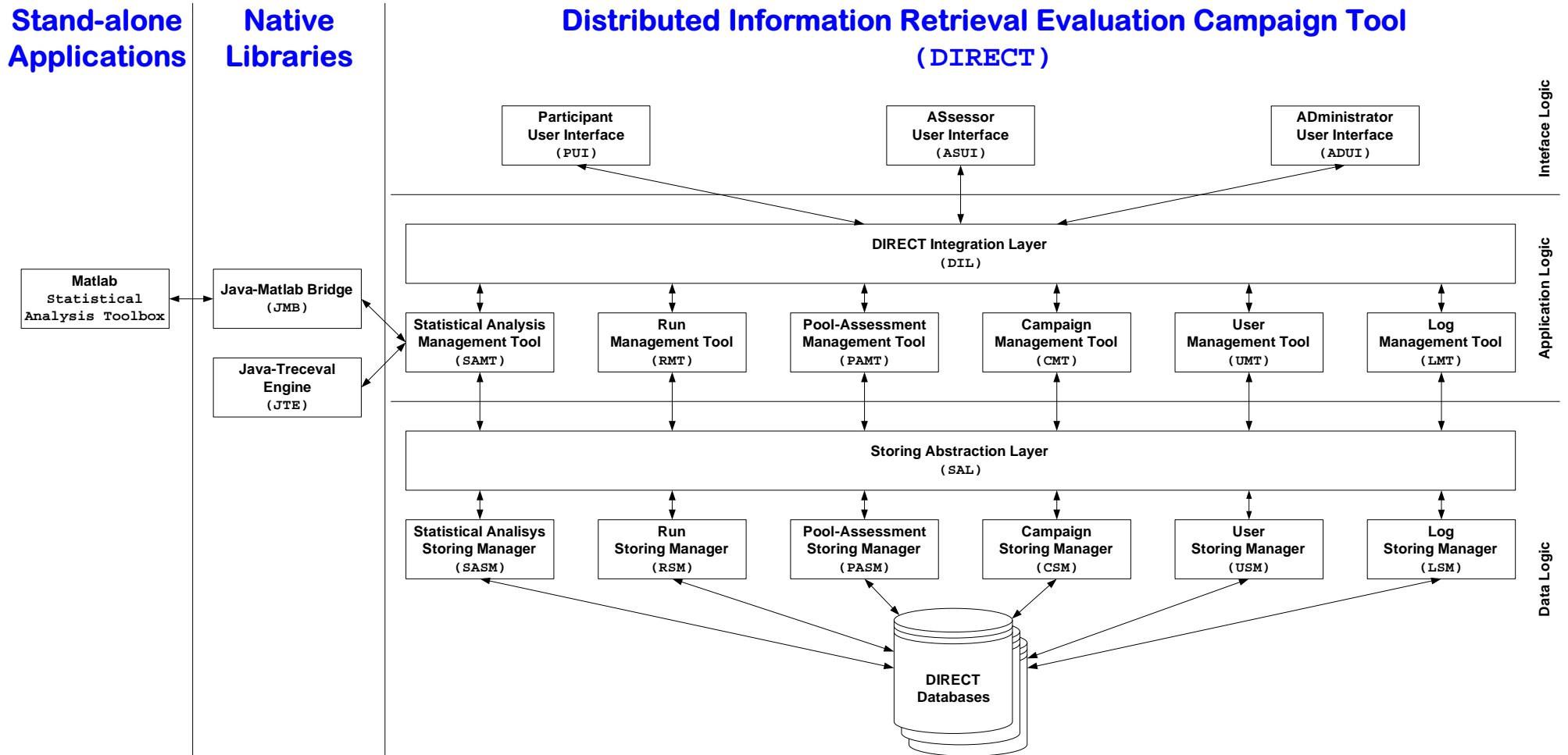
- IM5 Research Group** logo on the left.
- Cross Language Evaluation Forum** and **CLEF 2005** in large blue text in the center.
- CLEF** logo with a key icon on the right.
- Text: "powered by Distributed Information Retrieval Evaluation Campaign Tool (DIRECT)" and "Wed Sep 14 18:39:58 CEST 2005".
- Welcome to the DIRECT Login Page for CLEF 2005** in bold black text.
- Instructions: "Please enter your User Name and Password, and click Enter."
- Form fields for "User Name:" and "Password:".
- Radio buttons for role selection: "Participant", "Assessor" (selected), and "Organizer".
- An "Enter" button.
- Footer text: "CLEF is an activity of the DELOS Network of Excellence for Digital Libraries under the Sixth Framework Programme of the European Commission".
- DELOS logo (Network of Excellence for Digital Libraries).
- System tray: "Intranet locale".

Objectives

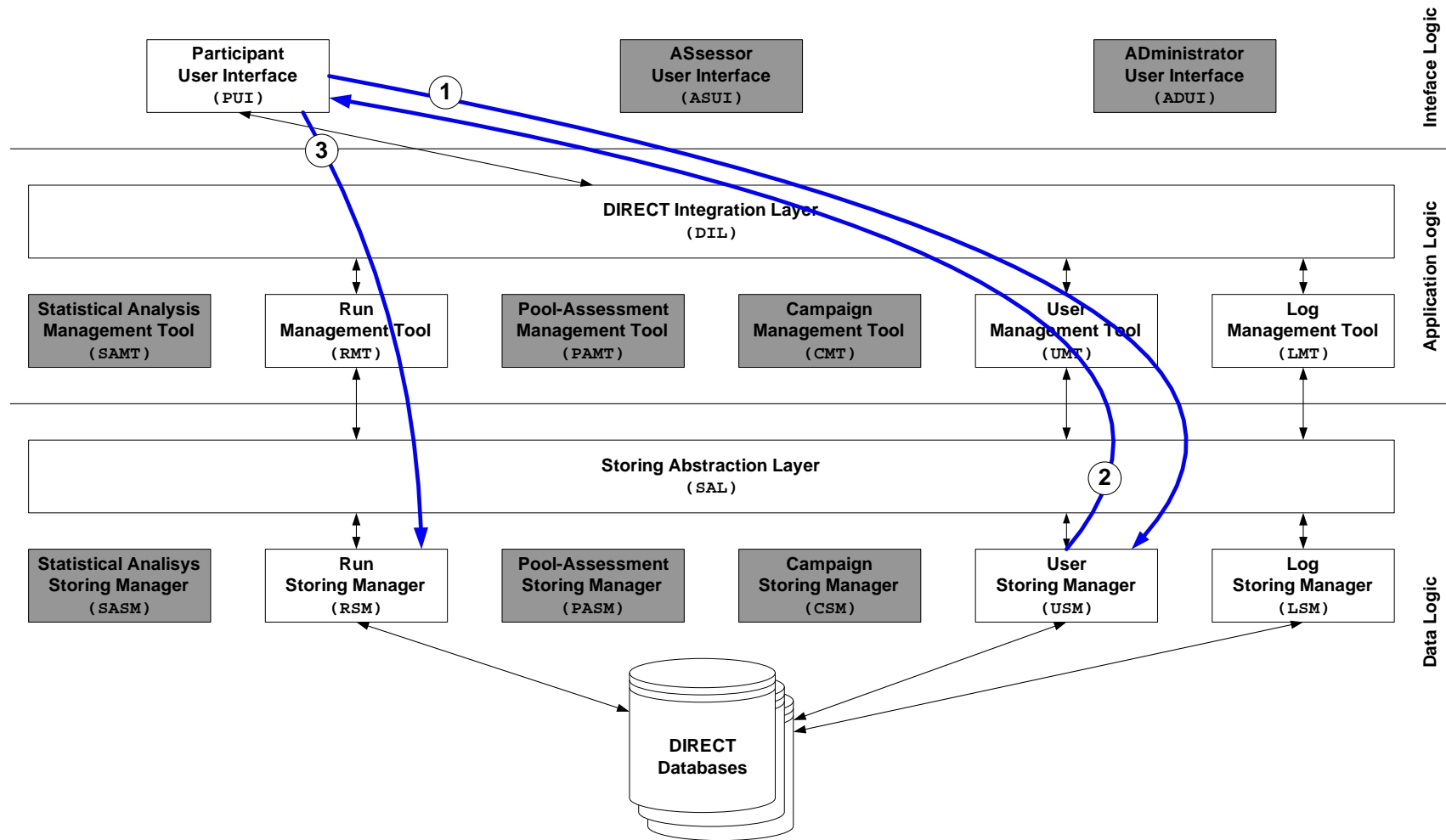
- ▶ a new approach to evaluation initiatives, which is able to take into account the distributed nature of the involved entities;
- ▶ to provide participants with a uniform way of performing statistical analysis on their results;
- ▶ to move towards a more aware way of evaluating performances:
 - ▷ to overcome the lack of stability of collections by fixing some reference collections that do not vary in time;
 - ▷ to face the lack of an historical/temporal vision of the evaluation.

DIRECT: Distributed Information Retrieval Evaluation Campaign Tool

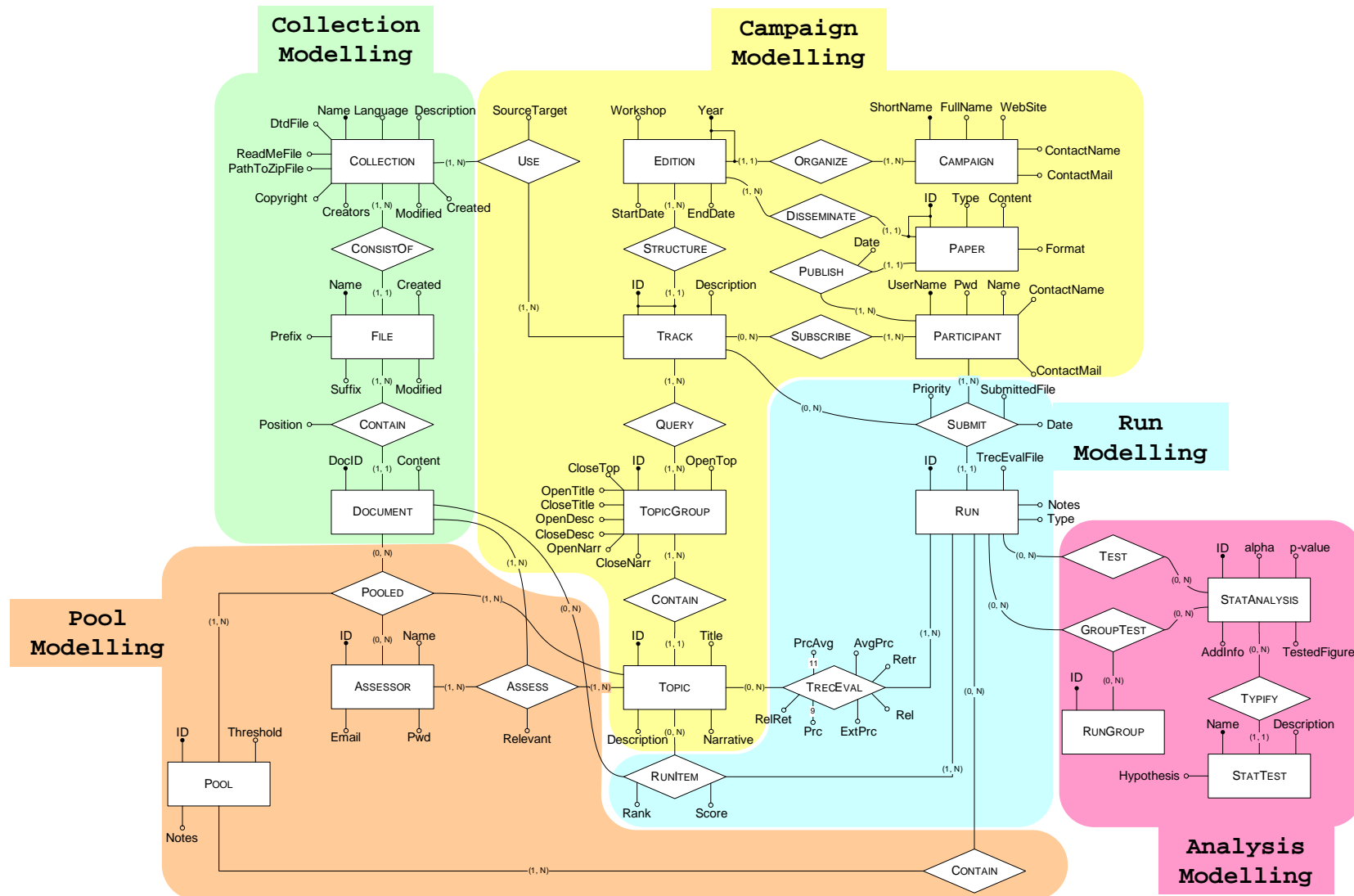
DIRECT Architecture



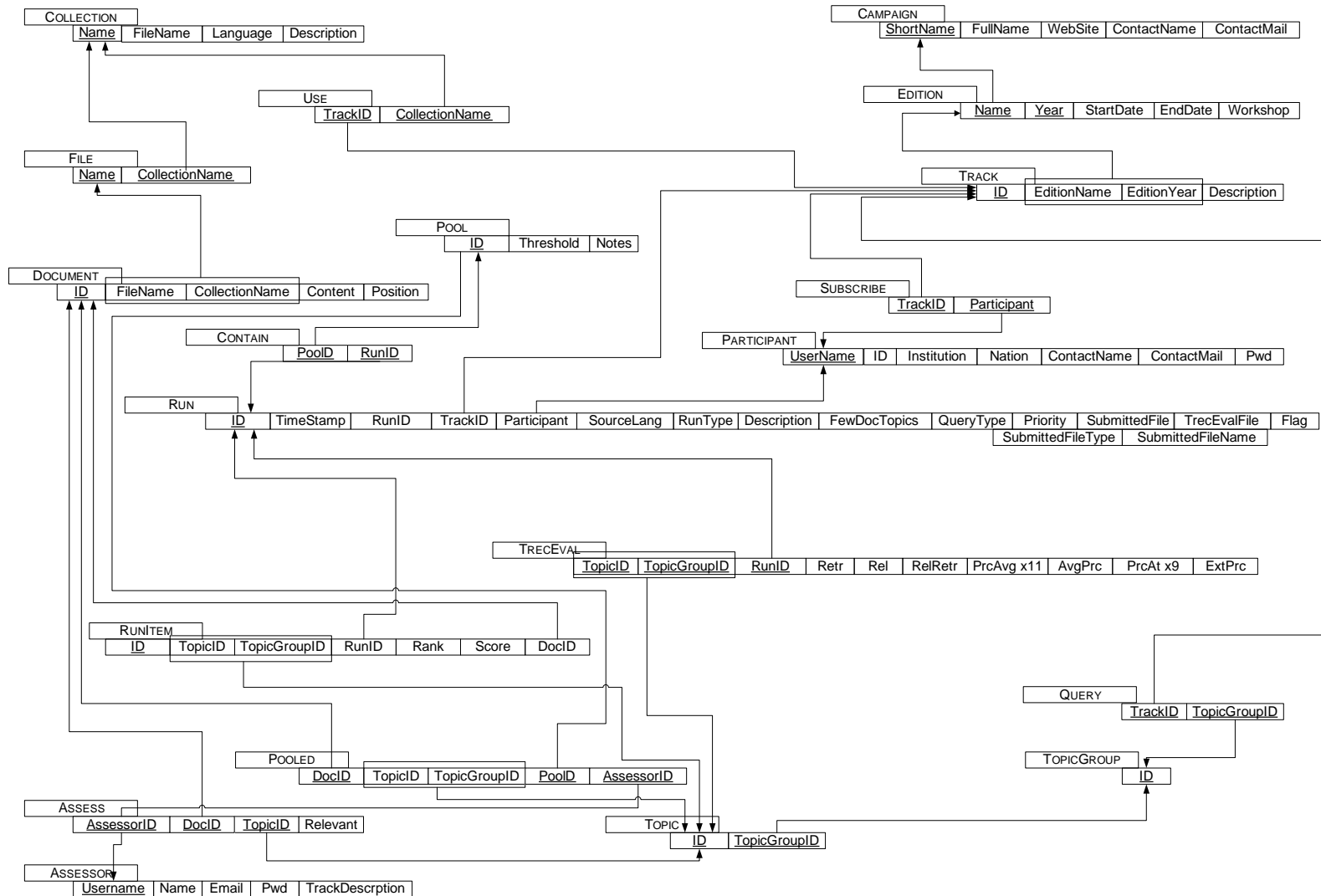
DIRECT: Example of Interaction



DIRECT: Entity–Relationship Schema



DIRECT: Relational Schema



Runs Submission User Interface

DIRECT for CLEF 2005 - Submission Page for Ad-Hoc Multilingual Multi-8 2-years-on by cmu - Microsoft Internet Explorer

File Modifica Visualizza Preferiti Strumenti ?

Indietro Cerca Preferiti

Indirizzo <http://cassandra:8080/direct/protected/participant/runSubmission.jsp?QA=false&firstTopicNumber=161&sourceLanguage=true&lastTopicNumber=200> Vai Collegamenti

powered by Distributed Information Retrieval Evaluation Campaign Tool (DIRECT) Wed Sep 14 19:02:22 CEST 2005

User cmu logged in Log out

The fields with (*) are mandatory

Information about the run

Run Identifier (*)	Track
<input type="text" value="bkmul8en3"/>	Ad-Hoc Multilingual Multi-8 2-years-on
Run Priority (*)	Run Description
<input type="text" value="1"/>	try by Nicola Ferro

Information about the query


Query Construction (*)	Topic Fields (*)
<input checked="" type="radio"/> Automatic <input type="radio"/> Manual	<input checked="" type="checkbox"/> Title <input checked="" type="checkbox"/> Description <input type="checkbox"/> Narrative
Source language (*)	Topics with less than 1000 retrieved documents (multiple choices by using CTRL + left click)
<input type="text" value="EN"/>	<input type="text" value="161"/> <input type="text" value="162"/> <input type="text" value="163"/> <input type="text" value="164"/> <input type="text" value="165"/> <input type="text" value="166"/>

Information about the file to upload

Please upload a **zip file** or a **gzip file** (no tar gzip files) (*)

zip
 gzip

CLEF is an activity of the DELOS Network of Excellence for Digital Libraries under the Sixth Framework Programme of the European Commission



Network of Excellence

Intranet locale

Assessors User Interface

DIRECT for CLEF 2005 - Topic (251, Top-bg05) - Assessment by ahbg05-kspo - Microsoft Internet Explorer

File Modifica Visualizza Preferiti Strumenti ?

Indietro - - - - - Cerca Preferiti - - - - - Vai Collegamenti

Indirizzo http://piscopia:8080/direct/protected/assessor/assessTopic.jsp

User ahbg05-kspo logged in Log out Back to Main page

Title
Алтернативна медицина

Description
Намерете документи, които дискутират някакъв вид алтернативно или природно медицинско лечение, включително специфичните терапии, като акупунктура, хомеопатия, хиропраксис и др.

Narrative
Подходящите документи ще осигурят обща или специфична информация относно употребата на естествени или алтернативни медицински лечения и практики.

Documents

NST2002-02-20-068 Relevant	View
NST2002-02-21-030 Not relevant	View
NST2002-02-22-149 Not relevant	View
NST2002-02-25-064 Not relevant	View
NST2002-02-26-021 Not relevant	View
NST2002-02-28-060 Not relevant	View
NST2002-03-01-073 Not relevant	View
NST2002-03-03-051 Not relevant	View

медицина

Document ID: NST2002-02-20-068

Status: Relevant

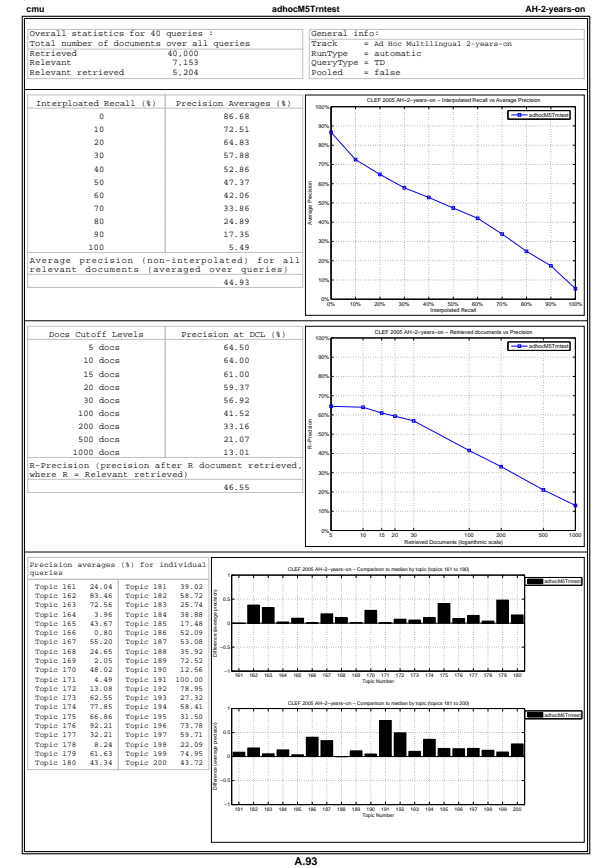
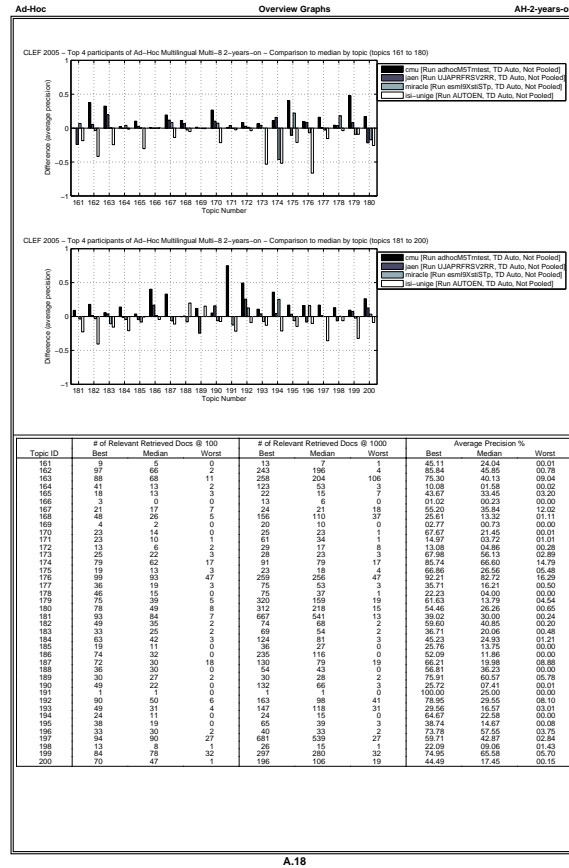
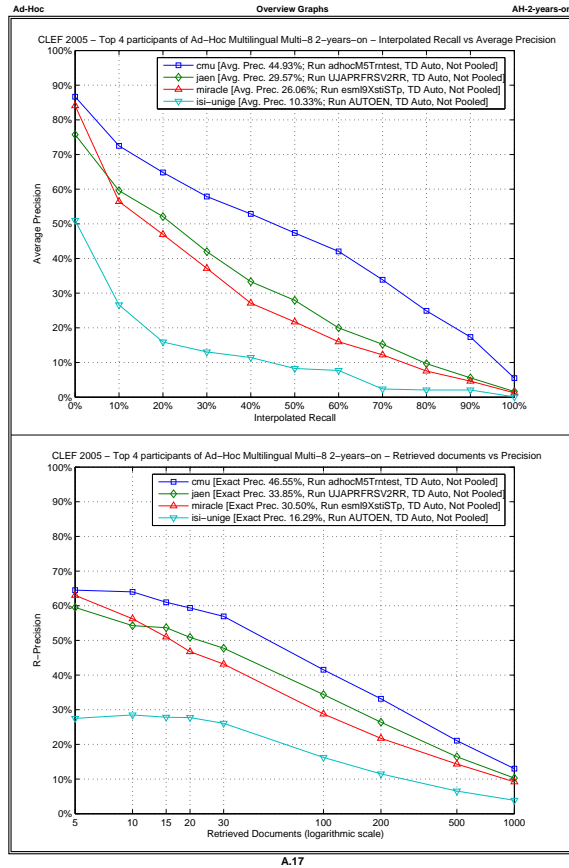
```
<DOCNO> NST2002-02-20-068 </DOCNO>
<TITLE> Не се подлагайте на " лечебен глад " </TITLE>
<AUTHOR> </AUTHOR>
<DATE> 20 / 02 / 2002 </DATE>
<RUBRIC> health </RUBRIC>
<TEXT>
```

Дългото лечение с глад не само не лекува язвеноболните, но може да завърши и фатално. Пълното разстройване на всички жизнени функции на организма довежда до саморазграждане на органите, образуване на свободни радикали, вредни вещества и токсини. Един плод ден в седмицата с поемане на достатъчно количество течности е наистина нещо полезно. Измислица е, че маслинените костилки ни помагат. Те не се стопяват, когато ги гълтаме. Дори са опасни в големи количества, защото могат да се слепят от слизестото вещество, което изпускат в стомаха. Добър терапевтичен ефект е получен при клинично лечение с пчелен мед и пчелни продукти. Подходящи са видовете от комунига, кестен, лавандула, мащерка, ливаден и полски мед. Взема се половин до два часа преди хранене или три часа след това, разтворен в чаша топла или минерална вода тип горнобанска, софийска, хисарска. Дневната доза от 100-120 г се разделя на три приема. Курсът на лечение трае 15-20 дни. Народната медицина препоръчва като лесно лекарство по 1 супена лъжица зехтин сутрин на гладно. Той облекчава болката, но не сериозно да се мисли, че така може да се излекува стара язвена болест.

</TEXT>

Operazione completata Intranet locale

Performance Evaluation



Future Directions

- ▶ Temporal/Hystorical comparison of systems performance across years could become a standard task;
- ▶ Common statistical analysis tools could be made available to participants;
- ▶ Participants could submit both “official” and “non official” runs;
- ▶ Runs could become first class digital objects and be referenceable by using Digital Object Identifiers (DOIs);
- ▶ Also statistical analyses could become first class digital objects and be referenceable by using DOIs.